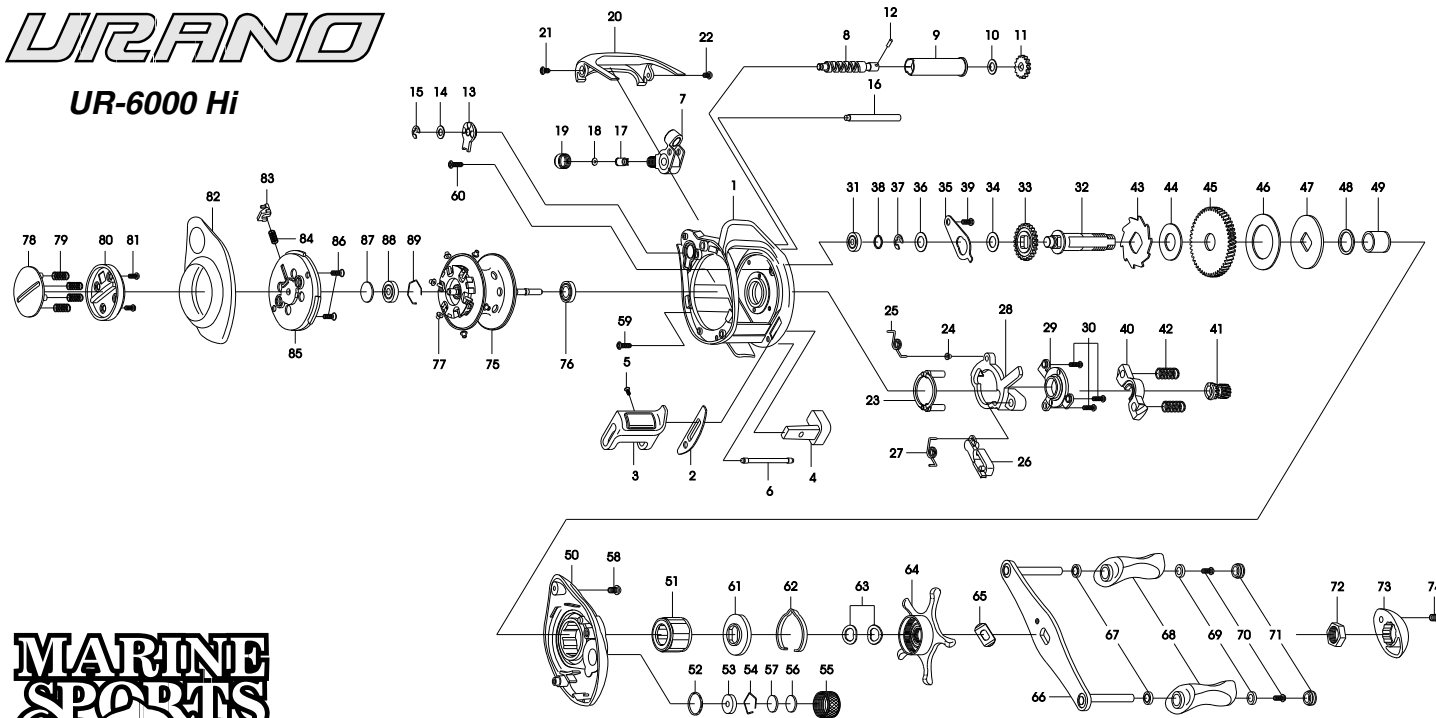


# URANO

## UR-6000 Hi



THE ORDER OF THE PART NUMBER IS BASED ON THAT OF THE REEL ASSEMBLY

| NO | PART NAME                   | NO | PART NAME             | NO | PART NAME                    | NO | PART NAME                  | NO | PART NAME              | NO | PART NAME                |
|----|-----------------------------|----|-----------------------|----|------------------------------|----|----------------------------|----|------------------------|----|--------------------------|
| 1  | FRAME                       | 16 | PILLAR                | 31 | BALL BEARING                 | 46 | DRAG WASHER (B)            | 61 | CLICK PLATE            | 76 | BALL BEARING             |
| 2  | CLUTCH BAR PLATE            | 17 | LINE GUIDE PAWL       | 32 | CRANK SHAFT                  | 47 | DRAG WASHER (D)            | 62 | CLICK LEAF SPRING      | 77 | BRAKE COLLAR(WHITE)(+6)  |
| 3  | CLUTCH BAR ASSEMBLY         | 18 | SPACER(OPTIONAL)      | 33 | IDLER(L)                     | 48 | SLEEVE WASHER(OPTIONAL)    | 63 | DRAG SPRING WASHER(+2) | 78 | LEVER PLATE              |
| 4  | CLUTCH LINK                 | 19 | PAWL CAP              | 34 | IDLER(L) WASHER (A)          | 49 | SLEEVE                     | 64 | STAR DRAG              | 79 | LEVER PLATE SPRING(+4)   |
| 5  | CLUTCH BAR SCREW            | 20 | FRONT COVER           | 35 | BEARING PLATE                | 50 | RIGHT SIDE COVER           | 65 | LEAF SPRING            | 80 | LOCK LEVER               |
| 6  | CLUTCH BAR SUPPORT          | 21 | FRONT COVER SCREW-A   | 36 | IDLER(L) WASHER (B)          | 51 | ONE WAY CLUTCH             | 66 | HANDLE ASSEMBLY        | 81 | LOCK LEVER SCREW(+2)     |
| 7  | LINE GUIDE ASSEMBLY         | 22 | FRONT COVER SCREW-B   | 37 | E-RING                       | 52 | O-RING                     | 67 | BALL BEARING(+2)       | 82 | LEFT SIDE COVER ASSEMBLY |
| 8  | WORM SHAFT                  | 23 | YOKE HOLDER           | 38 | CRANK SHAFT SPACER(OPTIONAL) | 53 | BUSHING                    | 68 | HANDLE KNOB(+2)        | 83 | LOCK PIN                 |
| 9  | LINE GUIDE PIPE             | 24 | CLUTCH SPRING BUSHING | 39 | BEARING PLATE SCREW          | 54 | BEARING RETAINER           | 69 | BUSH(+2)               | 84 | LOCK PIN SPRING          |
| 10 | IDLER(S) WASHER(OPTIONAL)   | 25 | CLUTCH SPRING         | 40 | PINION YOKE                  | 55 | CAST CONTROL CAP           | 70 | SCREW(+2)              | 85 | SPOOL COVER ASSEMBLY     |
| 11 | IDLER(S)                    | 26 | RETURN PAWL           | 41 | PINION GEAR                  | 56 | TENSION WASHER             | 71 | HANDLE KNOB CAP(+2)    | 86 | SPOOL COVER SCREW(+2)    |
| 12 | WORM SHAFT PIN              | 27 | RETURN PAWL SPRING    | 42 | PINION YOKE SPRING(+2)       | 57 | SPOOL SPACER (B)           | 72 | HANDLE NUT             | 87 | SPOOL SPACER(A)          |
| 13 | WORM SHAFT BUSHING (B)      | 28 | CLUTCH CAM            | 43 | RATCHET                      | 58 | RIGHT SIDE COVER SCREW (A) | 73 | HANDLE NUT CAP         | 88 | BALL BEARING             |
| 14 | WORM SHAFT WASHER(OPTIONAL) | 29 | CAM PLATE             | 44 | RATCHET WASHER               | 59 | RIGHT SIDE COVER SCREW (B) | 74 | HANDLE NUT CAP SCREW   | 89 | BEARING RETAINER         |
| 15 | E-RING                      | 30 | CAM PLATE SCREW (+3)  | 45 | DRIVE GEAR                   | 60 | RIGHT SIDE COVER SCREW (C) | 75 | SPOOL ASSEMBLY         |    |                          |