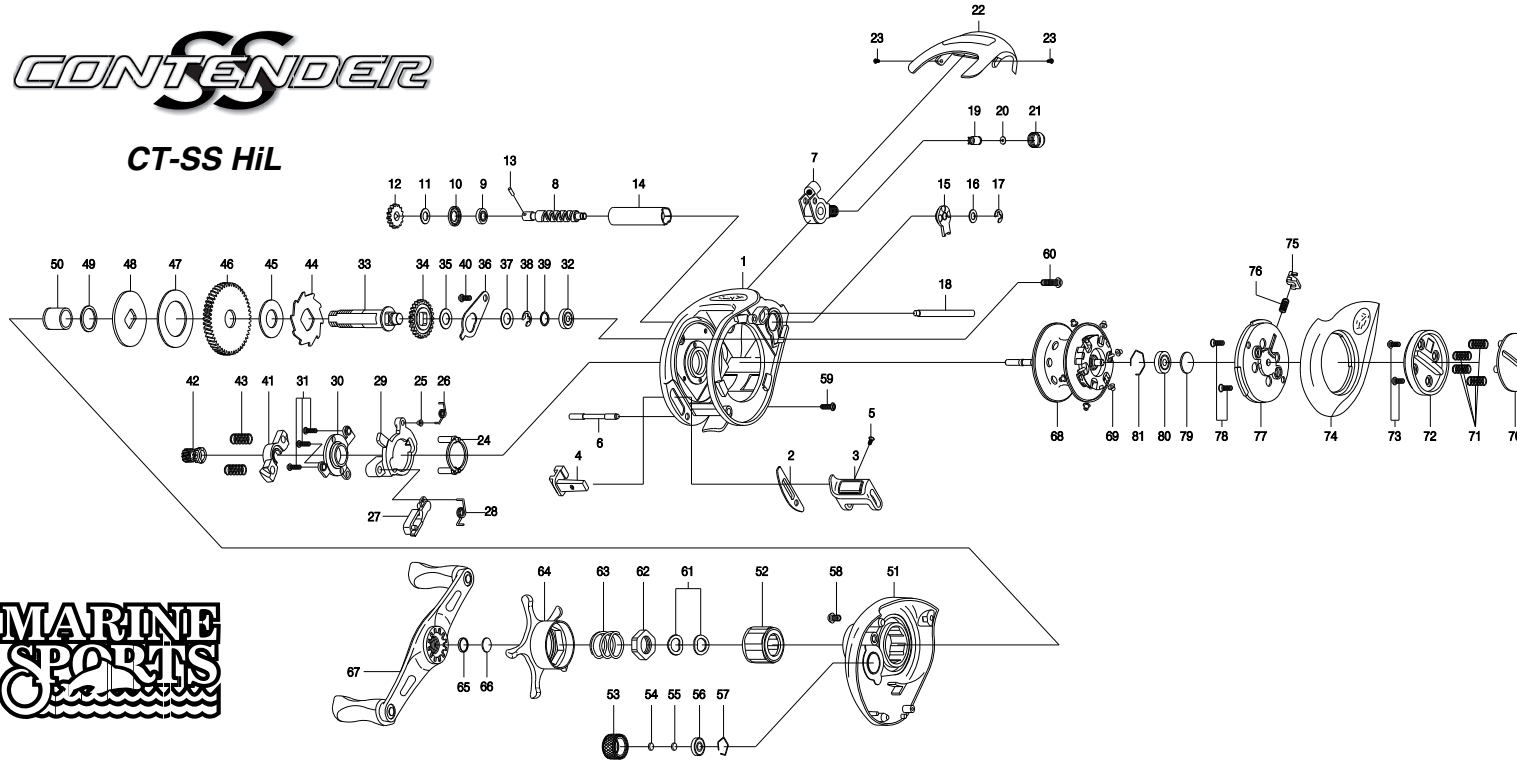


CONTENDER

CT-SS HiL



**MARINE
SPORTS**

THE ORDER OF THE PART NUMBER IS BASED ON THAT OF THE REEL ASSEMBLY

NO	PART NAME	NO	PART NAME	NO	PART NAME	NO	PART NAME	NO	PART NAME	NO	PART NAME
1	FRAME ASSEMBLY	16	WORM SHAFT WASHER(OPTIONAL)	31	CAM PLATE SCREW(+3)	46	DRIVE GEAR	61	DRAG SPRING WASHER(+2)	76	LOCK PIN SPRING
2	CLUTCH BAR PLATE	17	E-RING	32	BALL BEARING	47	DRAG WASHER (B)	62	DRAG NUT	77	SPOOL COVER ASSEMBLY
3	CLUTCH BAR ASSEMBLY	18	PILLAR	33	CRANK SHAFT	48	DRAG WASHER (D)	63	STAR DRAG SPRING	78	SPOOL COVER SCREW(+2)
4	CLUTCH LINK	19	LINE GUIDE PAWL	34	IDLER(L)	49	SLEEVE WASHER(OPTIONAL)	64	STAR DRAG ASSEMBLY	79	SPOOL SPACER(A)
5	CLUTCH BAR SCREW	20	SPACER(OPTIONAL)	35	IDLER(L) WASHER (A)(OPTIONAL)	50	SLEEVE	65	CUSHION WASHER	80	BALL BEARING
6	CLUTCH BAR SUPPORT	21	PAWL CAP	36	BEARING PLATE	51	RIGHT SIDE COVER ASSEMBLY	66	HANDLE SPACER	81	BEARING RETAINER
7	LINE GUIDE ASSEMBLY	22	FRONT COVER	37	IDLER(L) WASHER (B)	52	ONE WAY CLUTCH	67	HANDLE ASSEMBLY(INCL.4BB)		
8	WORM SHAFT	23	FRONT COVER SCREW(+2)	38	E-RING	53	CAST CONTROL CAP ASSEMBLY	68	SPOOL ASSEMBLY(INCL.1BB)		
9	BALL BEARING	24	YOKE HOLDER	39	CRANK SHAFT SPACER(OPTIONAL)	54	TENSION WASHER	69	BRAKE COLLAR(WHITE)(+6)		
10	WORM SHAFT BUSHING	25	CLUTCH SPRING BUSHING	40	BEARING PLATE SCREW	55	SPOOL SPACER (B)	70	LEVER PLATE		
11	IDLER(S) WASHER(OPTIONAL)	26	CLUTCH SPRING	41	PINION YOKE	56	BALL BEARING	71	LEVER PLATE SPRING(+4)		
12	IDLER(S)	27	RETURN PAWL	42	PINION GEAR	57	BEARING RETAINER	72	LOCK LEVER		
13	WORM SHAFT PIN	28	RETURN PAWL SPRING	43	PINION YOKE SPRING(+2)	58	RIGHT SIDE COVER SCREW (A)	73	LOCK LEVER SCREW(+2)		
14	LINE GUIDE PIPE	29	CLUTCH CAM	44	RATCHET	59	RIGHT SIDE COVER SCREW (B)	74	LEFT SIDE COVER ASSEMBLY		
15	WORM SHAFT BUSHING (B)	30	CAM PLATE	45	RATCHET WASHER	60	RIGHT SIDE COVER SCREW (C)	75	LOCK PIN		