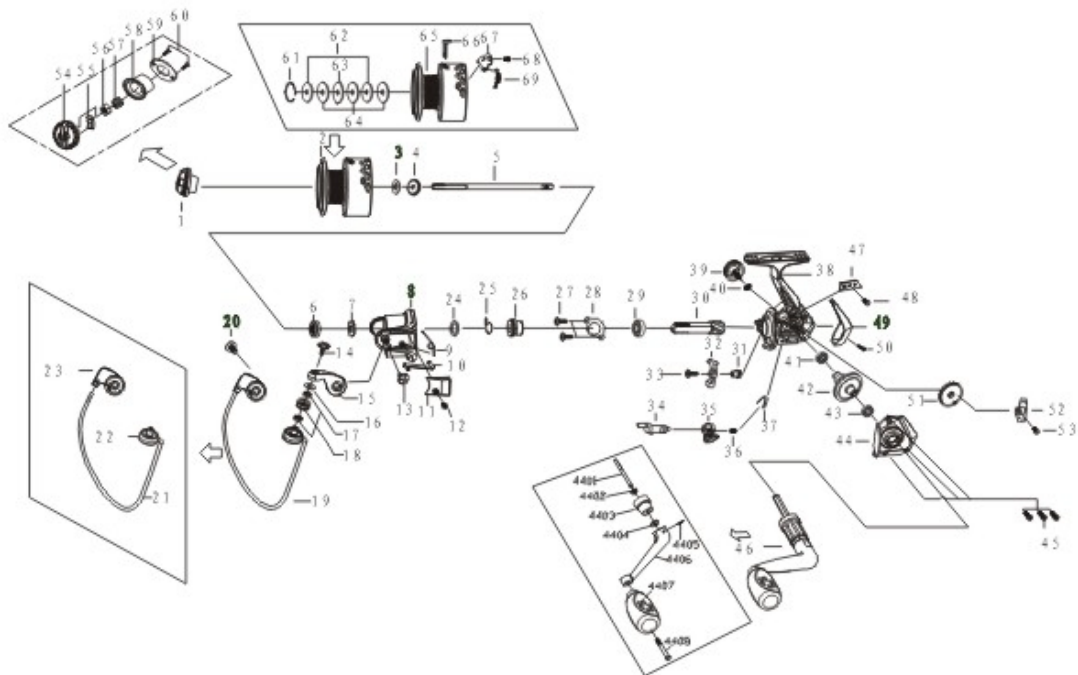


PRISMA

MICRO



- | | | |
|-----------------------------------|---------------------------------|-----------------------------|
| 1 Drag Knob Assembly | 33 Anti-reverse Pawl Screw | 63 Eared Washer |
| 2 Spool Assembly | 34 Anti-reverse Shaft | 64 Brake Washer |
| 3 Spool Clicker Fixing Plate | 35 Anti-reverse Switch | 65 Spool |
| 4 Spool Clicker | 36 Anti-reverse Switch Screw | 66 Line Clip |
| 5 Main Shaft | 37 Anti-reverse Spring | 67 Spool Clicker |
| 6 Pinion Bolt | 38 Body | 68 Spool Clicker Screw |
| 7 Rotor Washer | 39 Handle Cap | 69 Spool Clicker Spring |
| 8 Rotor | 40 Handle Cap Washer | |
| 9 Bail Arm Spring | 41 Body Bearing | Handle Assembly |
| 10 Ball Trip Lever | 42 Drive Gear | 4401 Hexangular Core |
| 11 Ball Arm Cover | 43 Main Cover Bearing | 4402 Hexangular Core Washer |
| 12 Ball Arm Cover Screw | 44 Body Cover | 4403 Bushing |
| 13 Ball Arm Screw | 45 Body Cover Screw | 4404 Bushing Washer |
| 14 Line Roller Screw | 46 Handle Assembly | 4405 Handle Pin |
| 15 Ball Arm | 47 Slider Fixing Plate | 4406 Handle |
| 16 Line Roller Washer | 48 Slider Fixing Plate Screw | 4407 Wooden Knob |
| 17 Line Roller Ball Bearing | 49 Rear Decoration Cover | 4408 Knob Rivet |
| 18 Line Roller | 50 Rear Cover Screw | |
| 19 Bail Line Assembly | 51 Oscillating Gear | |
| 20 Ball Holder Screw | 52 Oscillating Slider | |
| 21 Ball Line | 53 Oscillating Slider Screw | |
| 22 Line Roller Shaft | 54 Drag Knob | |
| 23 Ball Holder | 55 Drag Knob Clicker Plate | |
| 24 Rotor Washer | 56 Drag Knob Screw | |
| 25 Silent Spring | 57 Brake Spring | |
| 26 Silent Spring Bush | 58 Tightening Seat | |
| 27 Pinion Gear Ball Bearing Screw | 59 Tightening Seat Fixing Plate | |
| 28 Ball Bearing Fixing Plate | 60 Fixing Plate Screw | |
| 29 Pinion Gear Ball Bearing | 61 Hexangular Retainer | |
| 30 Pinion Gear | 62 Key Washer | |
| 31 Anti-reverse Pawl Bush | | |
| 32 Anti-reverse Pawl | | |

**MARINE
SPORTS**