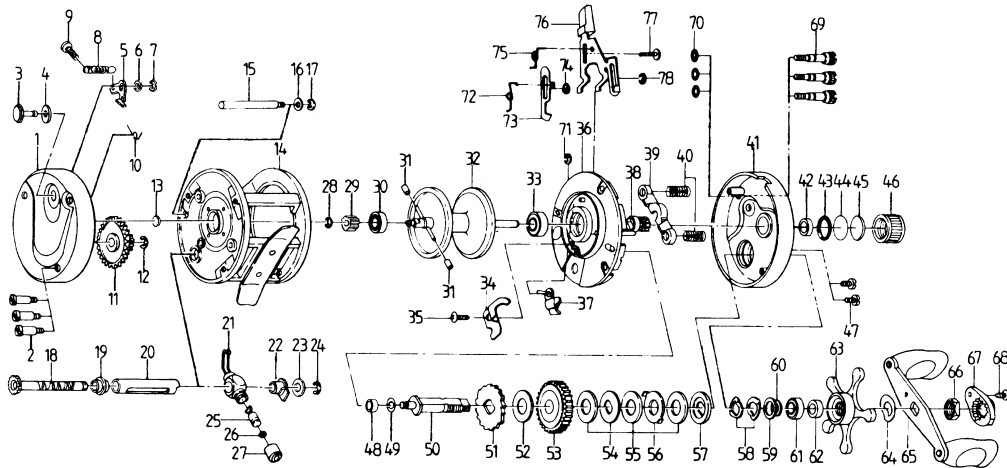


MARINE SPORTS

BAITCASTING REEL

MAGNA500



| Key No. | Parts No. | Parts Name | Key No. | Parts No. | Parts Name |
|---------|-----------|--------------------------------|---------|-----------|------------------------|
| 1 | 6K182949 | Left side plate | 40 | 6K175701 | Yoke spring |
| 2 | 6K169101 | Left side plate screw | 41 | 6K180651 | Right side plate |
| 3 | 6K183401 | Click button | 42 | 6K176801 | Ball bearing |
| 4 | 6K164101 | Click button washer | 43 | 6K176501 | "O" ring |
| 5 | 6K164301 | Click pawl | 44 | 6K164602 | Spacer B |
| 6 | 6K164402 | Click pawl washer | 45 | 6K181101 | Spool tension spring |
| 7 | 63205901 | Click pawl retainer | 46 | 6K177102 | Cast control cap |
| 8 | 6K164501 | Click pawl spring | 47 | 6K177202 | Set plate screw |
| 9 | 6K120002 | Click pawl screw | 48 | 6K170601 | Ball bushing |
| 10 | 6K183301 | Click set plate spring | 49 | 6E096501 | Drive shaft bushing |
| 11 | 6K183501 | Idle gear | 50 | 6K181501 | Drive shaft |
| 12 | 6K163601 | Idle gear retainer | 51 | 6K160001 | Anti-reverse ratchet |
| 13 | 6K164601 | Spacer A | 52 | 6K160101 | Drive shaft washer B |
| 14 | 6K184001 | Frame assembly | 53 | 6K160201 | Drive gear |
| 15 | 6K167301 | Stabilizer bar | 54 | 6K160401 | Key washer A |
| 16 | 6K159801 | Stabilizer bar spring washer | 55 | 6K160102 | Drag washer A |
| 17 | 63205901 | Stabilizer bar spring retainer | 56 | 6K160501 | Eared washer |
| 18 | 6K166801 | Worm shaft assmby | 57 | 6K160601 | Key washer B |
| 19 | 6K166801 | Worm bearing A | 58 | 6K160702 | Drag spring washer |
| 20 | 6K269701 | Level wind guard | 59 | 63737803 | Drag washer B |
| 21 | 6K166201 | Line guide | 60 | 6K177301 | Drag washer C |
| 22 | 6K165901 | Worm bearing B | 61 | 6K582201 | Ball bearing |
| 23 | 6K164403 | Worm shaft holder washer | 62 | 6K182601 | Bushing |
| 24 | 63205901 | Worm shaft retainer | 63 | 6K161005 | Star drag assembly |
| 25 | 6K256501 | Line guide pawl | 64 | 6K161401 | Friction washer |
| 26 | 6K167101 | Line guide washer | 65 | 6K161508 | Handle assembly |
| 27 | 6K167201 | Pawl cap | 66 | 6K178305 | Handle nut |
| 28 | 63205901 | Bearing retainer | 67 | 6K162105 | Handle nut plate |
| 29 | 6K166801 | Spool gear | 68 | 63511801 | Handle nut plate screw |
| 30 | 6K168701 | Ball bearing | 69 | 6K180901 | Right side plate screw |
| 31 | 6K169001 | Brake collar | 70 | 6K181001 | "O" ring |
| 32 | 6K184403 | Spool assembly | 71 | 63201402 | Set plate retainer A |
| 33 | 6K158701 | Ball bearing | 72 | 6K191501 | Kick lever spring |
| 34 | 6K181601 | Ball bearing retainer | 73 | 6K170901 | Kick lever |
| 35 | 6K120002 | Ball bearing retainer screw | 74 | 63201402 | Set plate retainer B |
| 36 | 6K181302 | Set plate | 75 | 6K182001 | Side plate spring |
| 37 | 6K182101 | Anti-reverse pawl | 76 | 6K181701 | Side plate assembly |
| 38 | 6K159101 | Pinion gear | 77 | 6K171401 | Side plate screw |
| 39 | 6K173801 | Yoke | 78 | 63201402 | Set plate retainer C |